

NPA

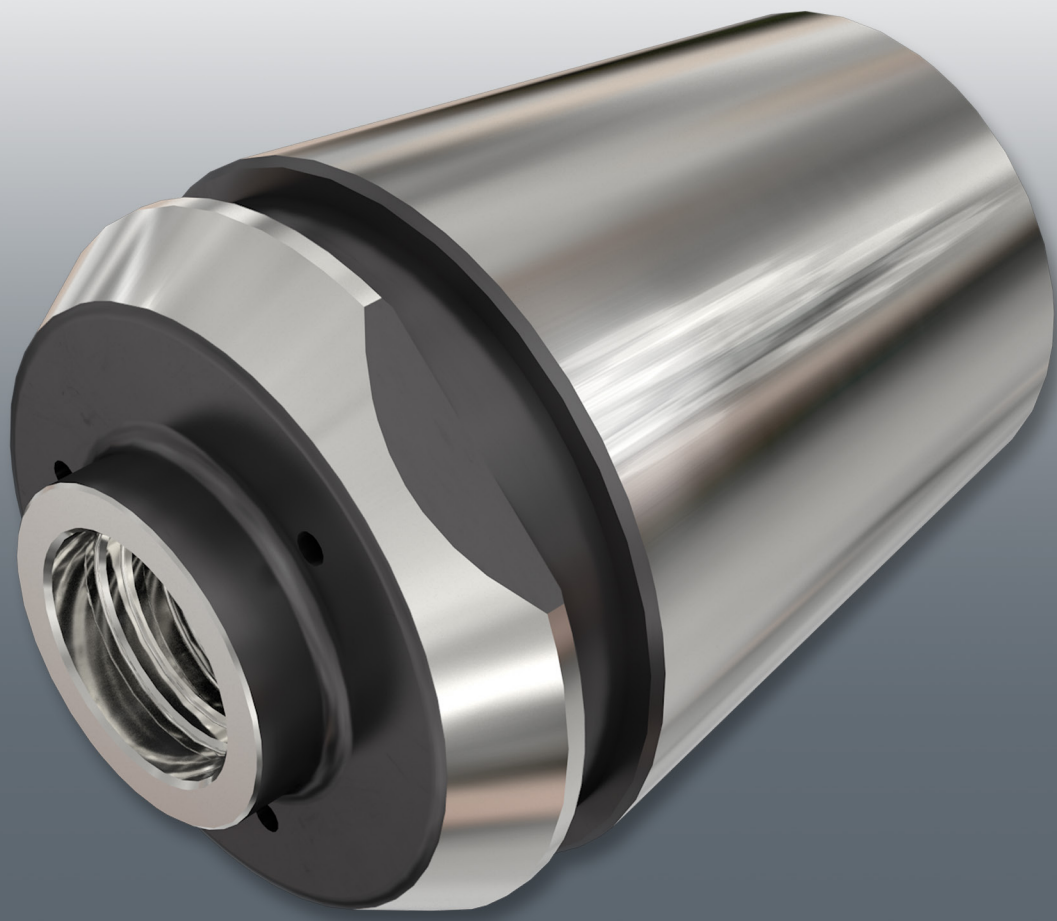
New Product Announcement

MILLING

18-2021

MARCH 2021 • METRIC

PAGE 1 / 3



MULTI-MASTER
INDEXABLE HEADS

**New MultiMaster Short ER32 Integral Collets
with New Coolant Options Intended fro Lathes
and Swiss Type Machines.**

MULTI-MASTER
INDEXABLE HEADS

Highlights

ISCAR Expands the MULTI-MASTER family by introducing new Short ER32 Integral Collets with 3- internal coolant channels, for lathes and Swiss Type Machines.

The new collets have a 4mm overhang and 3 coolant channels assuring accurate flow directed to the cutting edge. The new collets are available with the standard **MULTI-MASTER** T05, T06, T08, T10, T12 & T15 thread connections.

The new shanks provide highly rigid clamping for **MULTI-MASTER** milling heads, as they are connected to the machine tool spindle without adapters. The new ER shanks and the large assortment of **MULTI-MASTER** heads open the door for new opportunities.

Availability

In stock.

Prices

Your price list will be sent by the pricing department and updated in the **GAL** system.

We believe that introducing new MM ER... shanks will provide more applications and will contribute to advancing **MULTI-MASTER** products in your market.

Click Link to
See Short Video



<https://youtu.be/iqHrp8noAPI>

Sincerely,

Kobi Kisos
Chief Technical Officer,
Marketing Division
ISCAR Headquarters

Sincerely,

Michael Kotlyar
Director of Product Management,
Round Tools & Energy Industries
Marketing Division
ISCAR Headquarters

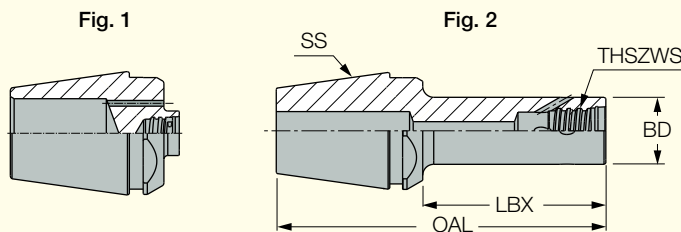
Sincerely,

Shmulik Weinshtein
Product Manager,
MULTI-MASTER
ISCAR Headquarters

MULTI-MASTER INDEXABLE HEADS

MM S-ER-H

Shanks for MULTI-MASTER Solid Carbide Heads with an ER Collet Adaptation and Coolant Holes



	Designation	SS	THSZWS	BD	LBX	OAL	Fig.	
NEW	MM S-A-H004-ER32-T05-H	ER32	T05	7.60	4.0	44.00	1	0.14
	MM S-A-H025-ER32-T05-H	ER32	T05	7.60	25.0	65.00	2	0.20
	MM S-A-H040-ER32-T05-H	ER32	T05	7.60	40.0	80.00	2	0.23
NEW	MM S-A-H004-ER32-T06-H	ER32	T06	9.60	4.0	44.00	1	0.14
	MM S-A-H025-ER32-T06-H	ER32	T06	9.25	25.0	65.00	2	0.20
	MM S-A-H040-ER32-T06-H	ER32	T06	9.25	40.0	80.00	2	0.22
NEW	MM S-A-H004-ER32-T08-H	ER32	T08	11.60	4.0	44.00	1	0.15
	MM S-A-H025-ER32-T08-H	ER32	T08	11.60	25.0	65.00	2	0.20
	MM S-A-H050-ER32-T08-H	ER32	T08	11.60	50.0	90.00	2	0.23
NEW	MM S-A-H004-ER32-T10-H	ER32	T10	15.30	4.0	44.00	1	0.14
	MM S-A-H025-ER32-T10-H	ER32	T10	15.30	25.0	65.00	2	0.20
	MM S-A-H050-ER32-T10-H	ER32	T10	15.20	50.0	90.00	2	0.25
NEW	MM S-A-H004-ER32-T12-H	ER32	T12	18.30	4.0	44.00	1	0.14
	MM S-A-H025-ER32-T12-H	ER32	T12	18.30	25.0	65.00	2	0.22
	MM S-A-H050-ER32-T12-H	ER32	T12	18.30	50.0	90.00	2	0.22
NEW	MM S-A-H004-ER32-T15-H	ER32	T15	23.90	4.0	44.00	1	0.15
	MM S-A-H025-ER32-T15-H	ER32	T15	23.90	25.0	65.00	2	0.21
	MM S-A-H050-ER32-T15-H	ER32	T15	23.90	50.0	90.00	2	0.25

• Do not apply lubricant to the threaded connection.