

Automation Productivity SCAR Metalworking MILLING Machin NEW Met Grooving New Threading NPA NEW Met Systems Innovation DRILLING Connectivity mation

NPA

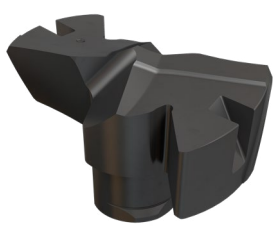
New Product Announcement

HOLEMAKING

34-2024

JUNE 2024

METRIC/IMPERIAL



High Productivity



No Setup Time



Flat Bottom Hole



SUMOCHAM
FLAT HEAD

FCP Line Expansion





High
Productivity



No Setup
Time



Flat Bottom
Hole

NPA

New Product Announcement

SUMOCHAM
FLAT HEAD

Highlights

Expanding the SUMOCHAM Line Of FCP Flat Drilling Heads

The SUMOCHAM line of FCP flat drilling heads has recently been expanded to include 0.1 mm (.004") diameter increment sizes, in addition to the 0.5 mm (.02") diameter increment sizes that were initially introduced. This means that the FCP drilling heads are now available in a range of 4.0 to 32.9 mm (.157" to 1.295") diameter, with increments of 0.1 mm (.004").

When drilling with FCP inserts, a nearly flat bottom hole is achieved, which is required for different applications. The FCP drilling heads can be mounted on any SUMOCHAM drill in the appropriate pocket size.

NPA

New Product Announcement

HOLEMAKING

34-2024

JUNE 2024

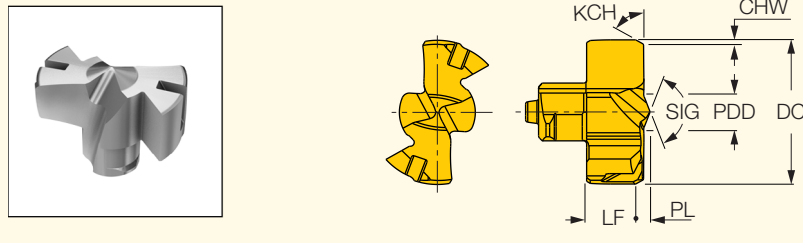
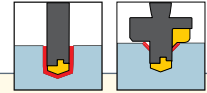
METRIC/IMPERIAL

SUMOCHAM FLAT HEAD

FCP

Exchangeable Flat Bottom SUMOCHAM Drilling Heads, for Machining ISO P and ISO K Materials

<https://www.iscar.com/eCatalog/Family.aspx?num=3156&mapp=DR&GFSTYP=M&srch=1>



M E T R I C

Designation	Dimensions								IC908
	DC	PDD	LF	PL	CHW	KCH	SIG	SSC ⁽¹⁾	
FCP 260	26.00	8.00	9.70	1.990	0.40	60.0	140	26.0	●
FCP 261	26.10	8.00	9.70	1.990	0.40	60.0	140	26.0	●
FCP 262	26.20	8.00	9.70	1.990	0.40	60.0	140	26.0	●
FCP 263	26.30	8.00	9.70	1.990	0.40	60.0	140	26.0	●
FCP 264	26.40	8.00	9.70	1.990	0.40	60.0	140	26.0	●
FCP 265	26.50	8.00	9.70	1.990	0.40	60.0	140	26.0	●
FCP 266	26.60	8.00	9.70	1.990	0.40	60.0	140	26.0	●
FCP 267	26.70	8.00	9.70	1.990	0.40	60.0	140	26.0	●
FCP 268	26.80	8.00	9.70	1.990	0.40	60.0	140	26.0	●
FCP 269	26.90	8.00	9.70	1.990	0.40	60.0	140	26.0	●
FCP 270	27.00	8.10	10.40	2.050	0.40	60.0	140	27.0	●
FCP 271	27.10	8.10	10.40	2.050	0.40	60.0	140	27.0	●
FCP 272	27.20	8.10	10.40	2.050	0.40	60.0	140	27.0	●
FCP 273	27.30	8.10	10.40	2.050	0.40	60.0	140	27.0	●
FCP 274	27.40	8.10	10.40	2.050	0.40	60.0	140	27.0	●
FCP 275	27.50	8.10	10.40	2.050	0.40	60.0	140	27.0	●
FCP 276	27.60	8.10	10.40	2.050	0.40	60.0	140	27.0	●
FCP 277	27.70	8.10	10.40	2.050	0.40	60.0	140	999	●
FCP 278	27.80	8.10	10.40	2.050	0.40	60.0	140	27.0	●
FCP 279	27.90	8.10	10.40	2.050	0.40	60.0	140	27.0	●
FCP 280	28.00	8.80	10.50	2.150	0.40	60.0	140	28.0	●
FCP 281	28.10	8.80	10.50	2.150	0.40	60.0	140	999	●
FCP 282	28.20	8.80	10.50	2.150	0.40	60.0	140	28.0	●
FCP 283	28.30	8.80	10.50	2.150	0.40	60.0	140	28.0	●
FCP 284	28.40	8.80	10.50	2.150	0.40	60.0	140	28.0	●
FCP 285	28.50	8.80	10.50	2.150	0.40	60.0	140	28.0	●
FCP 286	28.60	8.80	10.50	2.150	0.40	60.0	140	28.0	●
FCP 287	28.70	8.80	10.50	2.150	0.40	60.0	140	28.0	●
FCP 288	28.80	8.80	10.50	2.150	0.40	60.0	140	28.0	●
FCP 289	28.90	8.80	10.50	2.150	0.40	60.0	140	28.0	●
FCP 290	29.00	9.00	10.80	2.200	0.40	60.0	140	29.0	●
FCP 291	29.10	9.00	10.80	2.200	0.40	60.0	140	29.0	●
FCP 292	29.20	9.00	10.80	2.200	0.40	60.0	140	29.0	●
FCP 293	29.30	9.00	10.80	2.200	0.40	60.0	140	29.0	●
FCP 294	29.40	9.00	10.80	2.200	0.40	60.0	140	29.0	●
FCP 295	29.50	9.00	10.80	2.200	0.40	60.0	140	29.0	●
FCP 296	29.60	9.00	10.80	2.200	0.40	60.0	140	29.0	●
FCP 297	29.70	9.00	10.80	2.200	0.40	60.0	140	29.0	●

● For nearly flat bottom hole applications

⁽¹⁾ Seat size code

NPA

New Product Announcement

HOLEMAKING

34-2024

JUNE 2024

METRIC/IMPERIAL

SUMOCHAM

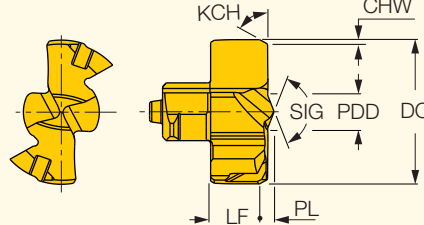
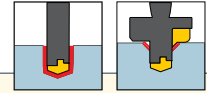
FLAT HEAD

(Continued)

FCP

Exchangeable Flat Bottom SUMOCHAM Drilling Heads, for Machining ISO P and ISO K Materials

<https://www.iscar.com/eCatalog/Family.aspx?fnum=3156&mapp=DR&GFSTYP=M&srch=1>



M E T R I C

Designation	Dimensions								IC908
	DC	PDD	LF	PL	CHW	KCH	SIG	SSC ⁽¹⁾	
FCP 298	29.80	9.00	10.80	2.200	0.40	60.0	140	29.0	●
FCP 299	29.90	9.00	10.80	2.200	0.40	60.0	140	29.0	●
FCP 300	30.00	9.10	11.40	2.150	0.40	60.0	140	30.0	●
FCP 301	30.10	9.10	11.40	2.150	0.40	60.0	140	30.0	●
FCP 302	30.20	9.10	11.40	2.150	0.40	60.0	140	999	●
FCP 303	30.30	9.10	11.40	2.150	0.40	60.0	140	30.0	●
FCP 304	30.40	9.10	11.40	2.150	0.40	60.0	140	30.0	●
FCP 305	30.50	9.10	11.40	2.150	0.40	60.0	140	30.0	●
FCP 306	30.60	9.10	11.40	2.150	0.40	60.0	140	30.0	●
FCP 307	30.70	9.10	11.40	2.150	0.40	60.0	140	30.0	●
FCP 308	30.80	9.10	11.40	2.150	0.40	60.0	140	30.0	●
FCP 309	30.90	9.10	11.40	2.150	0.40	60.0	140	30.0	●
FCP 310	31.00	9.10	11.70	2.180	0.40	60.0	140	31.0	●
FCP 311	31.10	9.10	11.70	2.180	0.40	60.0	140	31.0	●
FCP 312	31.20	9.10	11.70	2.180	0.40	60.0	140	31.0	●
FCP 313	31.30	9.10	11.70	2.180	0.40	60.0	140	31.0	●
FCP 314	31.40	9.10	11.70	2.180	0.40	60.0	140	31.0	●
FCP 315	31.50	9.10	11.70	2.180	0.40	60.0	140	31.0	●
FCP 316	31.60	9.10	11.70	2.180	0.40	60.0	140	31.0	●
FCP 317	31.70	9.10	11.70	2.180	0.40	60.0	140	31.0	●
FCP 318	31.80	9.10	11.70	2.180	0.40	60.0	140	31.0	●
FCP 319	31.90	9.10	11.70	2.180	0.40	60.0	140	31.0	●
FCP 320	32.00	9.80	12.10	2.250	0.40	60.0	140	32.0	●
FCP 321	32.10	9.80	12.10	2.250	0.40	60.0	140	32.0	●
FCP 322	32.20	9.80	12.10	2.250	0.40	60.0	140	32.0	●
FCP 323	32.30	9.80	12.10	2.250	0.40	60.0	140	32.0	●
FCP 324	32.40	9.80	12.10	2.250	0.40	60.0	140	32.0	●
FCP 325	32.50	9.80	12.10	2.250	0.40	60.0	140	32.0	●
FCP 326	32.60	9.80	12.10	2.250	0.40	60.0	140	32.0	●
FCP 327	32.70	9.80	12.10	2.250	0.40	60.0	140	32.0	●
FCP 328	32.80	9.80	12.10	2.250	0.40	60.0	140	32.0	●
FCP 329	32.90	9.80	12.10	2.250	0.40	60.0	140	32.0	●

● For nearly flat bottom hole applications

⁽¹⁾ Seat size code

NPA New Product Announcement

HOLEMAKING

34-2024

JUNE 2024

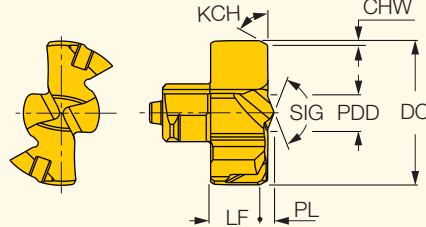
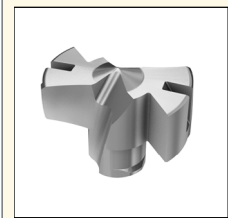
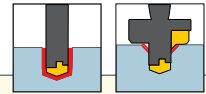
METRIC/IMPERIAL

SUMOCHAM FLAT HEAD

FCP

Exchangeable Flat Bottom SUMOCHAM Drilling Heads, for Machining ISO P and ISO K Materials

<https://www.iscar.com/eCatalog/Family.aspx?num=3156&mapp=DR&GFSTYP=l&srch=1>



I N C H

Dimensions

Designation	DC	PDD	LF	PL	CHW	KCH	SIG	SSC ⁽¹⁾	IC908
FCP 1024	1.024	.315	.382	.07834	.016	60.00	140	26.0	●
FCP 1028	1.028	.315	.382	.07834	.016	60.00	140	26.0	●
FCP 1032	1.031	.315	.382	.07834	.016	60.00	140	26.0	●
FCP 1035	1.035	.315	.382	.07834	.016	60.00	140	26.0	●
FCP 1039	1.039	.315	.382	.07834	.016	60.00	140	26.0	●
FCP 1043	1.043	.315	.382	.07834	.016	60.00	140	26.0	●
FCP 1047	1.047	.315	.382	.07834	.016	60.00	140	26.0	●
FCP 1051	1.051	.315	.382	.07834	.016	60.00	140	26.0	●
FCP 1055	1.055	.315	.382	.07834	.016	60.00	140	26.0	●
FCP 1059	1.059	.315	.382	.07834	.016	60.00	140	26.0	●
FCP 1063	1.063	.319	.409	.08070	.016	60.00	140	27.0	●
FCP 1067	1.067	.319	.409	.08070	.016	60.00	140	27.0	●
FCP 1070	1.071	.319	.409	.08070	.016	60.00	140	27.0	●
FCP 1074	1.075	.319	.409	.08070	.016	60.00	140	27.0	●
FCP 1078	1.079	.319	.409	.08070	.016	60.00	140	27.0	●
FCP 1083	1.083	.319	.409	.08070	.016	60.00	140	27.0	●
FCP 1086	1.087	.319	.409	.08070	.016	60.00	140	27.0	●
FCP 1090	1.091	.319	.409	.08070	.016	60.00	140	999	●
FCP 1094	1.094	.319	.409	.08070	.016	60.00	140	27.0	●
FCP 1098	1.098	.319	.409	.08070	.016	60.00	140	27.0	●
FCP 1102	1.102	.346	.413	.08464	.016	60.00	140	28.0	●
FCP 1106	1.106	.346	.413	.08464	.016	60.00	140	999	●
FCP 1110	1.110	.346	.413	.08464	.016	60.00	140	28.0	●
FCP 1114	1.114	.346	.413	.08464	.016	60.00	140	28.0	●
FCP 1118	1.118	.346	.413	.08464	.016	60.00	140	28.0	●
FCP 1122	1.122	.346	.413	.08464	.016	60.00	140	28.0	●
FCP 1126	1.126	.346	.413	.08464	.016	60.00	140	28.0	●
FCP 1130	1.130	.346	.413	.08464	.016	60.00	140	28.0	●
FCP 1134	1.134	.346	.413	.08464	.016	60.00	140	28.0	●
FCP 1138	1.138	.346	.413	.08464	.016	60.00	140	28.0	●
FCP 1142	1.142	.354	.425	.08661	.016	60.00	140	29.0	●
FCP 1145	1.146	.354	.425	.08661	.016	60.00	140	29.0	●
FCP 1149	1.150	.354	.425	.08661	.016	60.00	140	29.0	●
FCP 1153	1.154	.354	.425	.08661	.016	60.00	140	29.0	●
FCP 1157	1.157	.354	.425	.08661	.016	60.00	140	29.0	●
FCP 1161	1.161	.354	.425	.08661	.016	60.00	140	29.0	●
FCP 1165	1.165	.354	.425	.08661	.016	60.00	140	29.0	●
FCP 1169	1.169	.354	.425	.08661	.016	60.00	140	29.0	●

• For nearly flat bottom hole applications

⁽¹⁾ Seat size code

NPA New Product Announcement

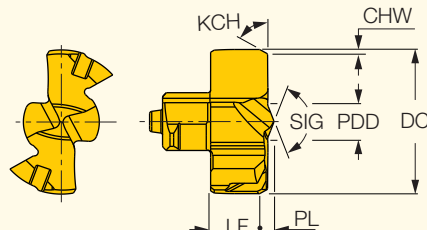
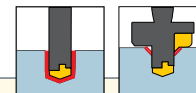
SUMOCHAM FLAT HEAD

(Continued)

FCP

Exchangeable Flat Bottom SUMOCHAM Drilling Heads, for Machining ISO P and ISO K Materials

<https://www.iscar.com/eCatalog/Family.aspx?num=3156&mapp=DR&GFSTYP=l&srch=1>



I N C H

Dimensions

Designation	DC	PDD	LF	PL	CHW	KCH	SIG	SSC ⁽¹⁾	IC908
FCP 1173	1.173	.354	.425	.08661	.016	60.00	140	29.0	●
FCP 1177	1.177	.354	.425	.08661	.016	60.00	140	29.0	●
FCP 1181	1.181	.358	.449	.08464	.016	60.00	140	30.0	●
FCP 1185	1.185	.358	.449	.08464	.016	60.00	140	30.0	●
FCP 1189	1.189	.358	.449	.08464	.016	60.00	140	999	●
FCP 1193	1.193	.358	.449	.08464	.016	60.00	140	30.0	●
FCP 1197	1.197	.358	.449	.08464	.016	60.00	140	30.0	●
FCP 1200	1.201	.358	.449	.08464	.016	60.00	140	30.0	●
FCP 1204	1.205	.358	.449	.08464	.016	60.00	140	30.0	●
FCP 1208	1.209	.358	.449	.08464	.016	60.00	140	30.0	●
FCP 1212	1.213	.358	.449	.08464	.016	60.00	140	30.0	●
FCP 1217	1.217	.358	.449	.08464	.016	60.00	140	30.0	●
FCP 1220	1.220	.358	.461	.08582	.016	60.00	140	31.0	●
FCP 1224	1.224	.358	.461	.08582	.016	60.00	140	31.0	●
FCP 1228	1.228	.358	.461	.08582	.016	60.00	140	31.0	●
FCP 1232	1.232	.358	.461	.08582	.016	60.00	140	31.0	●
FCP 1236	1.236	.358	.461	.08582	.016	60.00	140	31.0	●
FCP 1240	1.240	.358	.461	.08582	.016	60.00	140	31.0	●
FCP 1244	1.244	.358	.461	.08582	.016	60.00	140	31.0	●
FCP 1248	1.248	.358	.461	.08582	.016	60.00	140	31.0	●
FCP 1252	1.252	.358	.461	.08582	.016	60.00	140	31.0	●
FCP 1256	1.256	.358	.461	.08582	.016	60.00	140	31.0	●
FCP 1260	1.260	.386	.476	.08858	.016	60.00	140	32.0	●
FCP 1264	1.264	.386	.476	.08858	.016	60.00	140	32.0	●
FCP 1267	1.268	.386	.476	.08858	.016	60.00	140	32.0	●
FCP 1271	1.272	.386	.476	.08858	.016	60.00	140	32.0	●
FCP 1275	1.276	.386	.476	.08858	.016	60.00	140	32.0	●
FCP 1280	1.280	.386	.476	.08858	.016	60.00	140	32.0	●
FCP 1284	1.283	.386	.476	.08858	.016	60.00	140	32.0	●
FCP 1287	1.287	.386	.476	.08858	.016	60.00	140	32.0	●
FCP 1291	1.291	.386	.476	.08858	.016	60.00	140	32.0	●
FCP 1295	1.295	.386	.476	.08858	.016	60.00	140	32.0	●

• For nearly flat bottom hole applications

⁽¹⁾ Seat size code